

COMMON MODE CHOKE

Features:

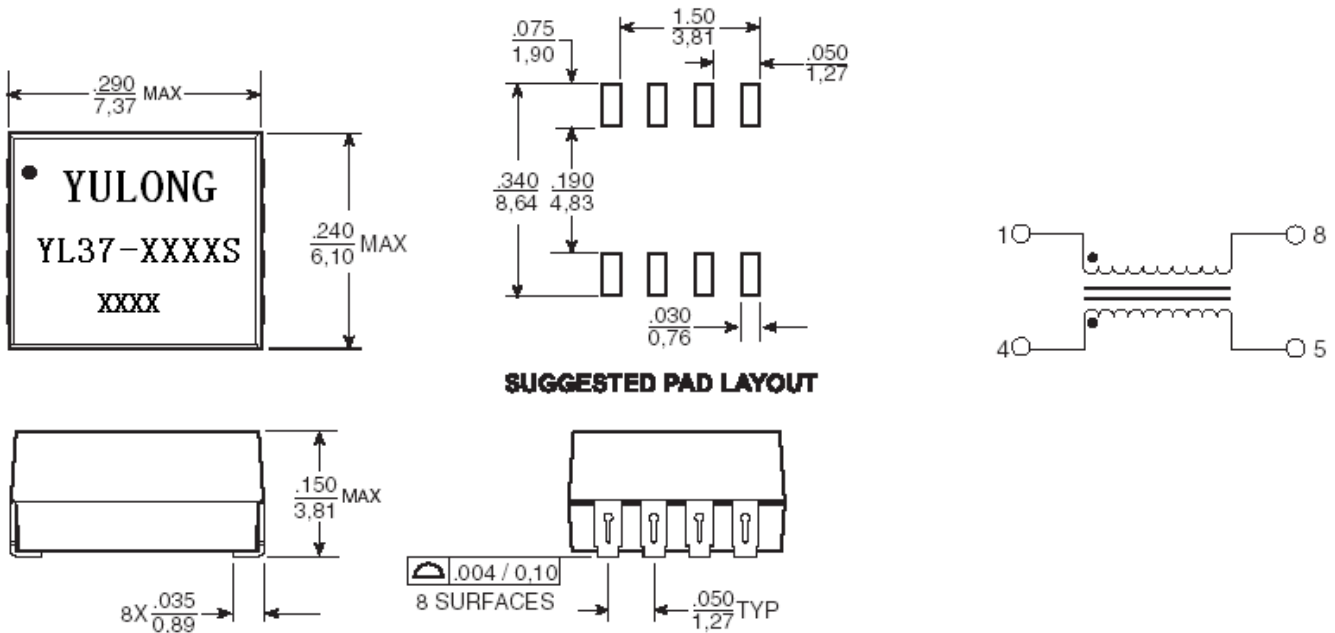
- For Fibre Channel,Gigabit Ethernet,and Ieee 1394 Applications
- Common Mode Attenuation from 200MHz tp 2.5 GHz
- Reduces radiated emissionand improves noise immunity
- 235°C Peak Reflow temperature rating Surface mount,auto-insertable package
- industrial temperature range

Electrical Specifications @ 25°C---Operating Temperature -40°C to +85°C

Part Number	Common Mode Attenuation(dB TYPE)						Primary ductance OCL(uH min)	DCR (Ω MAX)
	200 MHz	500 MHz	1.0 GHz	1.5 GHz	2.0 GHz	2.5 GHz		
YL37-1801S	-11.0	-11.0	-11.0	-10.0	-9.0	-7.5	3	15

Mechanicals

Schematics



NOTE:Dimensions:inches unless otherwise specified all tolerances are ±0.010/0.25