

T1/E1/CEPT/ISDN-PRI TRANSFORMERS

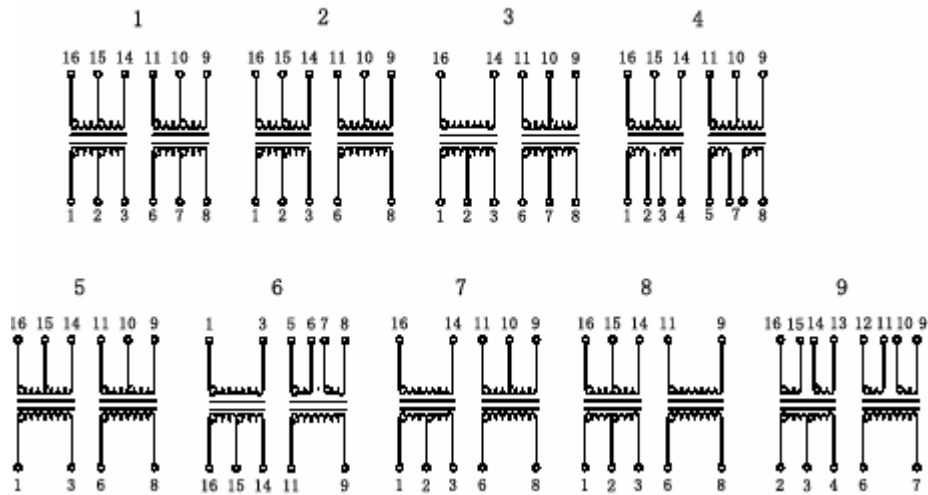
Features:

- Dual Surface Mount,1500Vrms,Small Package
- Dual SMT package contains both transmit and receive transformers
- Models matched to leading transceiver ICs
- Operating temperature 0°C to 70°C
- Contact YUTAI for Farther Requirements

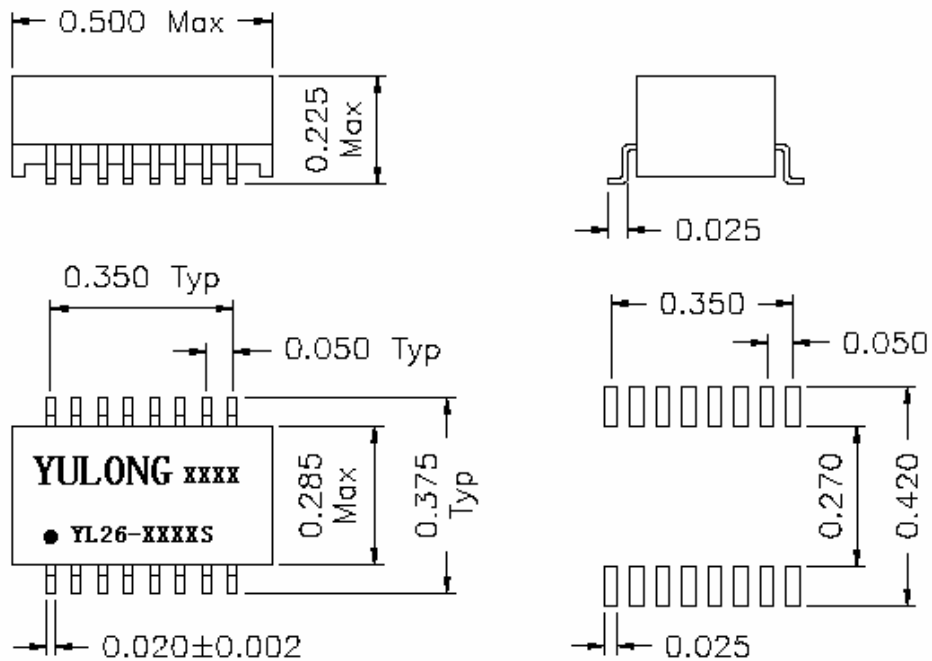
Electrical Specifications @ 25°C

Part Number	Turns-Ratio (Pri:Sec±5%)	OCL (mH Min)	Cw/w (pf Max)	Li (uH Max)	DCR Pri (Ω Max)	Seh	Primary Pin
YL26-1061S	1CT:2CT&1CT:2CT	1.20&1.20	30&30	0.6&0.6	0.7&0.7	1	16-14;6-8
YL26-1062S	1CT:2CT&1CT:1.36CT	1.20&1.20	30&30	0.6&0.6	0.7&0.7	2	16-14;6-8
YL26-1065S	1CT:1.15CT&1CT:2CT	1.20&1.20	30&30	0.6&0.6	0.7&0.7	3	16-14;6-8
YL26-1066S	1CT:1/1.26&1CT:2CT	1.20&1.20	30&30	0.6&0.6	0.7&0.7	3	16-14;6-8
YL26-1070S	1CT:1.15CT&1CT:1.15CT	1.20&1.20	30&30	0.6&0.6	0.7&0.7	1	1-3;6-8
YL26-1022S	1CT:1CT&1CT:1.5CT	1.20&1.20	30&30	0.8&0.8	0.7&0.7	1	16-14;6-8
YL26-1078S	1CT:1CT&1CT:2CT	1.20&1.20	30&30	0.6&0.6	0.7&0.7	1	16-14;6-8
YL26-1086S	1CT:1.41CT&1CT:1.41CT	1.20&1.20	30&30	0.6&0.6	0.7&0.7	1	16-14;11-9
YL26-1023S	1CT:1.41CT&1CT:1.41CT	1.20&1.20	30&30	0.6&0.6	0.7&0.7	1	1-3;11-9
YL26-1044S	1CT:1CT&1CT:2.4CT	1.20&1.20	30&30	0.8&0.8	0.85&0.85	1	11-9;1-3
YL26-1097S	1CT:1CT&1CT:1.67CT	1.20&1.20	25&25	0.8&0.8	0.8&0.8	1	6-8;14-16
YL26-1036S	1CT:1CT&1CT:1.36CT	1.20&1.20	30&30	0.6&0.6	0.7&0.7	1	6-8;1-3
YL26-1121S	1CT:1.5CT&1CT:1.15CT	1.20&1.20	40&40	0.8&0.8	0.7&0.7	1	1-3;6-8
YL26-1122S	1CT:2CT&1CT:2.3CT	1.20&1.20	30&30	0.8&0.8	0.9&0.9	1	6-8;14-16
YL26-1021S	2CT:1/1.26&2CT:1/1.26	1.20&1.20	40&40	0.5&0.5	0.7&0.7	1	1-3;11-9
YL26-1075S	2CS:1.57/2&2CS:1.57/2	1.20&1.20	40&40	0.5&0.5	0.7&0.7	4	1-2;5-6
YL26-1090S	1CT:1CT&1CT:1.36CT	1.20&1.20	30&30	0.6&0.6	0.7&0.7	1	16-14;6-8
YL26-1037S	1CT:2.42CT&1CT:2.42CT	1.20&1.20	25&25	0.6&0.6	0.7&0.7	1	1-3;6-8
YL26-1046S	1:2/2.4&1:0.79/1	1.20&1.20	35&35	1.0&1.0	0.8&0.8	5	1-3;6-8
YL26-1286S	1CT:2.4CT&1CT:2.4CT	1.20&1.20	15&15	0.3&0.3	0.3&0.3	1	1-3;6-8
YL26-1017S	1:2CT&1:2CS	1.20&1.20	35&35	0.5&1.0	1.0&1.0	6	1-3;11-9
YL26-1189S	1:1.36CT&1:2CT	1.20&1.20	30&30	0.6&0.6	1.0&1.0	7	16-14;6-8
YL26-1188S	1CT:2CT&1CT:2CT	1.20&1.20	30&30	0.6&0.6	0.7&0.7	1	1-3;6-8
YL26-1187S	1CT:2CT&1:1	1.20&1.20	30&30	0.6&0.6	0.7&0.7	8	1-3;6-8
YL26-1088S	1CT:2CT&1CT:2.42CT	1.20&1.20	35&35	0.8&0.8	1.0&1.0	1	1-3;6-8
YL26-1089S	1CT:1CT&1CT:1CT	1.20&1.20	30&30	0.8&0.8	0.7&0.7	1	1-3;6-8
YL26-1099S	1CT:1:0.8&1CT:1:0.8	1.20&1.20	30&30	0.8&0.8	1.0&1.0	4	16-14;11-9
YL26-1186S	1CT:1.58:2&1:1.65:2	1.20&1.20	30&30	0.8&0.8	1.0&1.0	9	2-4;6-78
YL26-1067S	1CT:1:1&1CT:1:1	1.20&1.20	30&30	0.8&0.8	1.0&1.0	4	16-14;11-9

Schematics



Mechanical



NOTE:Dimensions:inches/mm unless otherwise specified all tolerances are $\pm 0.010/0.25$